



PPM 2000 Inc.  
10088 - 102 Avenue, Suite 1307  
Edmonton, Alberta T5J 2Z1

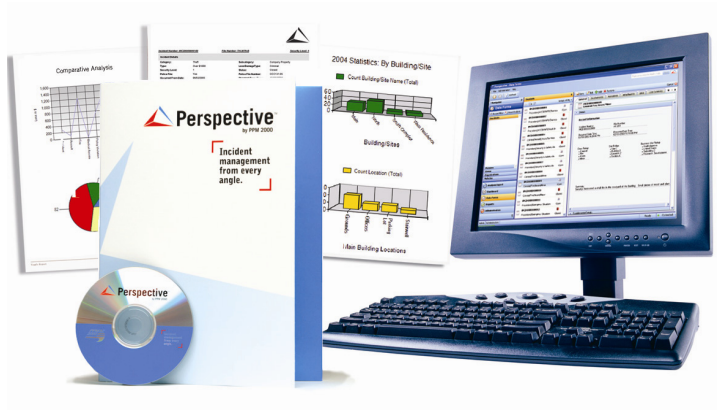
www.ppm2000.com  
Telephone: (780) 448-0616  
Fax: (780) 448-0618



## PRESS RELEASE

FOR IMMEDIATE RELEASE

**INTRODUCING PERSPECTIVE™ by PPM 2000 Inc.**  
**Enterprise-level Incident Reporting & Investigation Management Software.**



Edmonton, AB—July 27, 2006—Introducing **Perspective by PPM 2000**, a new Incident Management system that balances front-end record keeping with sophisticated analysis.

With Perspective, Corporate Security has access to a single enterprise platform to capture and report data relative to incidents, investigations and exposure. Corporate Security can then intelligently action and query the data for trending, risk mitigation and planning activities. With the ability to accurately assess what is happening and its potential impact, management can make informed decisions that optimize Corporate Security's performance and improve its ability to safeguard the organization's people, assets and reputation.

"Our mandate was to develop the 'best-in-class' Incident Management system available," announced PPM 2000's Founder and President, Denis O'Sullivan, CPP. "We wanted to build on the successes of IRIMS and IXO while taking advantage of leading edge technology to introduce a new generation of Incident Management to our clients."

For documentation, Perspective goes beyond routine incident reporting to offer complete investigation management. Interactive user dashboards encourage collaboration while procedural consistency is emphasized through well-designed incident and investigation tracking. Multilevel information containment provides a high level of information security and the flexibility to segregate and consolidate vast amounts of data. Perspective features

Incident  
management  
from every  
angle





**PPM 2000 Inc.**  
10088 - 102 Avenue, Suite 1307  
Edmonton, Alberta T5J 2Z1

**www.ppm2000.com**  
Telephone: (780) 448-0616  
Fax: (780) 448-0618



on-demand and custom reporting together with the unique ability to analyze any information in the database.

Approaching Incident Management as an integral business process, Perspective's add-on modules help organizations use incident data to improve operations, justify resources and address compliance requirements. Perspective's first module, **Visual Analysis**, brings clarity to complex investigations and scenarios through dynamic link analysis, transforming routine data into visual elements that can easily be interpreted. Upcoming modules include **e-Reporting, Performance Management** and **Workflow**.

Brian McIlravey, CPP, PPM 2000's Vice-President of Consulting & Training led the Perspective project, "Perspective is the culmination of three years of design and over two years of development. A lot of incident reporting systems focus on data entry... and we've covered that... but we've added complete investigation management together with a high level of statistical analysis. You can focus on a single incident, or you can look at the big picture. It's about incident management from every angle... it's about putting your incident activity in perspective."

Perspective was built on the .NET Framework using smart client technology. It is a centrally managed Web services application that will be easy to deploy, update and maintain throughout the enterprise and across multiple sites.

#### **About PPM 2000 Inc.:**

PPM 2000 was established in 1988 to develop Incident Reporting and Investigation Management software for the corporate security industry. They specialize in customizable, turnkey solutions that take routine incident reporting to the next level to spot trends, assess risk and measure performance. Thousands of organizations have implemented a PPM solution, and the company's clients span all industries and include many of the Fortune 1000. PPM 2000 is a Microsoft Gold Certified Partner. For more information, visit [www.ppm2000.com](http://www.ppm2000.com) or call (888) 776-9776.

#### **Editorial Contact:**

Elaine O'Sullivan  
VP, Marketing & Communications  
780-448-0616 (ext-4028)  
[elaine.osullivan@ppm2000.com](mailto:elaine.osullivan@ppm2000.com)

Copyright © 2006 PPM 2000 Inc. All rights reserved. PPM 2000 and the PPM 2000 logo are registered trademarks of PPM 2000 Inc. Perspective by PPM 2000 and the Perspective by PPM 2000 logo are trademarks of PPM 2000 Inc. All other brands, names, or trademarks mentioned may be trademarks of their respective owners.

Incident  
management  
from every  
angle

